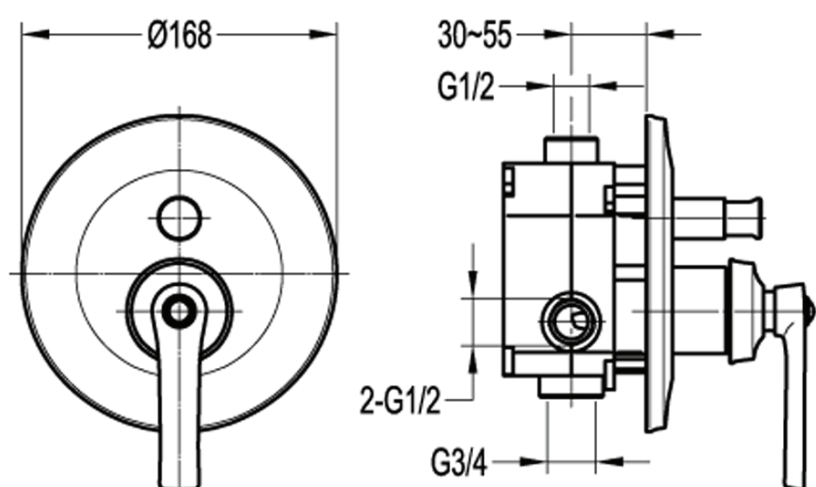


## LIBERTY Shower or Bath Mixer CHROME

### FWL8303CP Shower or Bath Mixer Chrome

Shower or bath mixer finished in chrome.

Recommended working pressure 200 - 500kPa (balanced)



## CARE AND USE

### LIBERTY CHROME

The chrome finish is smooth, abrasion resistant, corrosion resistant, fade-proof and easy to clean. It is a hard wearing surface that won't chip, peel or tarnish with normal use. All surfaces should be regularly wiped clean with non scouring, neutral wash solutions.

Never use an abrasive cleaner.

## LIMITED PRODUCT WARRANTIES

To be read in conjunction with and subject to all terms and conditions contained in the Waterware 'Producer Statement' available on-line (<http://www.waterware.co.nz/media-downloads>)

From date of purchase, Waterware Services warrants products from the following categories to be free from manufacturing defect subject to exclusions (if applicable):

Category	Domestic Installations	Commercial Installations	Exclusions
Tapware - shower mixer	5 years parts and labour 6 - 10 years parts only	1 year parts and labour	None